

LPOS-II-128P

Standard POS keyboard

Product description

Use

POS-keyboards are great solution for automation processes in self-service stores and retail-stores. That is why POS-keyboards fairly are used in 'help-yourself' shops, groceries, appliance shops, clothing stores, building material stores, jewelries and so on. Programmable POS-keyboards could be used not only with commerce operations but also with service desks like hotels, gaming halls, restaurants etc. Modern design along with reliability and rich functionality make LPOS keyboards handy and usable.

Customize

Our series of LPOS keyboards is perfect for building POS-workstations. You can program every key and assign it to a specific function. It supports 4 keyboard layouts, and so you can program every single key at each layout. Besides, our LPOS keyboard series is compatible with all standard POS peripherals so you can fully customize your working space.

Power

Our LPOS keyboard series was developed to be used for intensive data input. Operating life of the mechanical contact modules (Cherry MX) makes the keyboard failover through its lifetime. We simplified electric circuit of our LPOS keyboard and balanced its net cost. One of the most edgy features is keyboard layout count. All our keyboards of LPOS series have 4 keyboard layouts.

Performance

We have achieved a high level of reliability POS keyboard through contact module Cherry MX-1A (Germany). In addition, all components are installed on high-quality two-way glass fiber grade FR-4. The internal memory for storing the keyboard layout is not less than 8 KB. This is enough to be programmed on each key, on average: 75 characters for 32-bit key keyboard with a PS / 2, 225 characters for 32-key keyboard interface RS232 or USB.

Features

RS-232, PS / 2, USB software for programming the layout (MPOS-master), akompaktny design, the warranty period - 12 months. the date of sale, the service life - 36 months., housing ABS-plastic, transparent set of caps on the keys or opaque to the laser engraving inscriptions (optional)

Types of Interfaces



Sales:
phone: +38 (0432) 55 40 45
e-mail: order@posua.com

Ukraine

Support:
phone: +38 (093) 074 58 85
+38 (093) 074-58-88
e-mail: support@posua.com

Sale:
phone: +7 (495) 380 07 59
+7 (926) 216 32 79
e-mail: dep.sales@posua.com

Russia

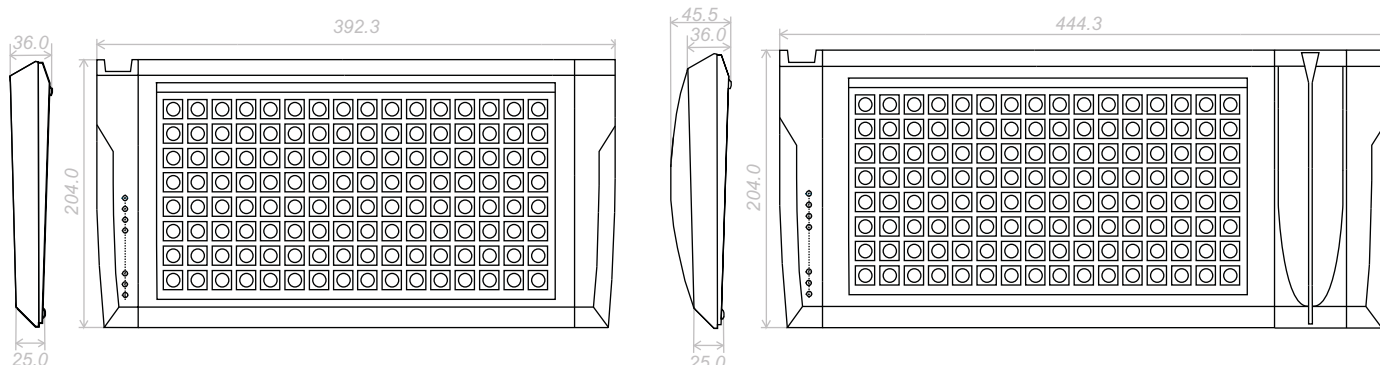


POSUA
<http://posua.com>

LPOS-II-128P

Standard POS keyboard

Dimensions



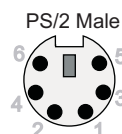
Types of Interfaces

Программируемых клавиш: 128
Уровни раскладок: 4
Тип клавиш: Cherry MX1A с перекрестными золотыми контактами (Германия)
Типы интерфейсов: PS/2, RS232, USB
Ресурс нажатий: > 50'000'000
Диапазон рабочих температур: 0 °C...+70 °C
Напряжение питания: 4.5-5.6 V

Выбор комплектации:

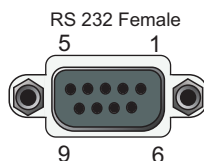
- 1) базовая комплектация ;
- 2) со считывателем магнитных карт (масса: 1.00 кг нетто, 1.24 кг брутто);
- 3) со сканером отпечатков пальцев;
- 4) со считывателем магнитных карт и сканером отпечатков пальцев;
- 5) цвет корпуса - серый (RAL9002) или черный (RAL9005).

Types of Interfaces



View from solder side

Contact	Chain
1	Data
2	n/c
3	GND
4	VCC
5	CLK
6	n/c

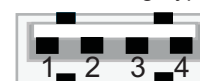


View from solder side

Contact	Chain
2	RxD
3	TxD
4	RTS
5	GND
7	DTR

Keyboard with RS232 interface is low power consumption (consumption current up to 10mA), so in some cases it can be used without power source. (For complete details, read "User's Guide Program MPOS-Master")

USB Male Plug Type A



View from solder side

Contact	Chain
1	+5
2	-Data
3	+Data
4	GND

Ukraine

Sales:
phone: +38 (0432) 55 40 45
e-mail: order@posua.com

Support:
phone: +38 (093) 074 58 85
+38 (093) 074-58-88
e-mail: support@posua.com

Russia

Sale:
phone: +7 (495) 380 07 59
+7 (926) 216 32 79
e-mail: dep.sales@posua.com



POSUA
<http://posua.com>